

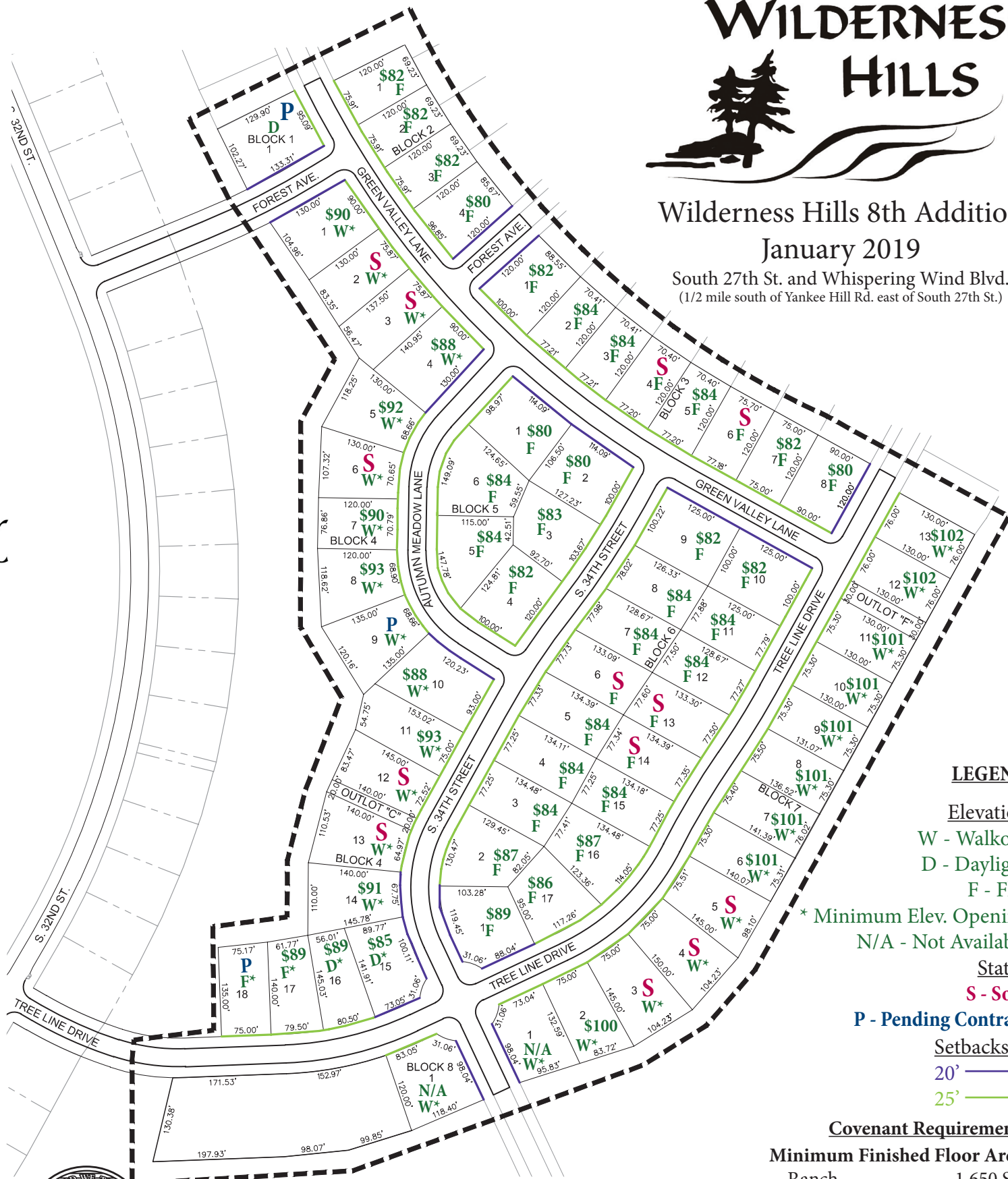
WILDERNESS HILLS



Wilderness Hills 8th Addition

January 2019

South 27th St. and Whispering Wind Blvd.
(1/2 mile south of Yankee Hill Rd. east of South 27th St.)



LEGEND

Elevation

W - Walkout

D - Daylight

F - Flat

* Minimum Elev. Opening

N/A - Not Available

Status

S - Sold

P - Pending Contract

Setbacks

20' ———

25' ———

Covenant Requirements

Minimum Finished Floor Area:

Ranch 1,650 S.F.

1 1/2 Story 1,850 S.F.

2 Story 2,150 S.F.

Plan, elevation, and site approval required.
See restrictive covenants specific to this addition for other restrictions including exterior finish, roofing requirements, and setbacks.
Association Dues: \$100 per fiscal year



Lincoln Federal

Shelly Simonson
1101 "N" St.
Lincoln, NE 68508
ssimonson@lincolnfed.com
www.lincolnfed.com
(402) 474-1400

BANCORP, INC.



Lincoln Federal

BANCORP, INC.

Shelly Simonson
 1101 "N" St.
 Lincoln, NE 68508
 ssimonson@lincolnfed.com
 www.lincolnfed.com
 (402) 474-1400



WILDERNESS HILLS



January 2019

LOT ELEVATION INFORMATION		
LOT INFORMATION	MIN. OPENING	LOWEST FLOOR
LOT 11, BLK 4, 7TH ADD	1246.17	-
LOT 1, BLK 5, 7TH ADD	1244.31	-
LOT 13, BLK 6, 5TH ADD	1224.31	-
LOT 14, BLK 6, 5TH ADD	1223.72	-
LOT 5, 5TH ADD	1220.82	1216.65
LOT 6, 6TH ADD	1220.82	1216.50
LOT 19, BLK 4, 8TH ADD	1220.82	1216.50
LOT 1, BLK 5, 5TH ADD		1212.21

LEGEND

Elevation

- W - Walkout
- D - Daylight
- F - Flat

* Irregular Elevation

Status

- S - Sold
- P - Pending Contract
- N/A - Delayed Availability

Covenant Requirements

Minimum Finished Floor Area:

Ranch	1,650 S.F.
1 1/2 Story	1,850 S.F.
2 Story	2,150 S.F.

Plan, elevation, and site approval required.
 See restrictive covenants specific to this addition for other restrictions including exterior finish, roofing requirements, and setbacks.
 Association Dues: \$100 per fiscal year