



**Wilderness Hills 4th Addition**

South 27th St. and Whispering Wind Blvd.  
(1/2 mile south of Yankee Hill Rd. east of South 27th St.)

**Covenant Requirements**

**Minimum Finished Floor Area:**

- Ranch 1,650 S.F.
- 1 1/2 Story 1,850 S.F.
- 2 Story 2,150 S.F.

Plan, elevation, and site approval required.  
See restrictive covenants specific to this addition for other restrictions including exterior finish, roofing requirements, and setbacks.

Association Dues: \$100 per year

Developed By:



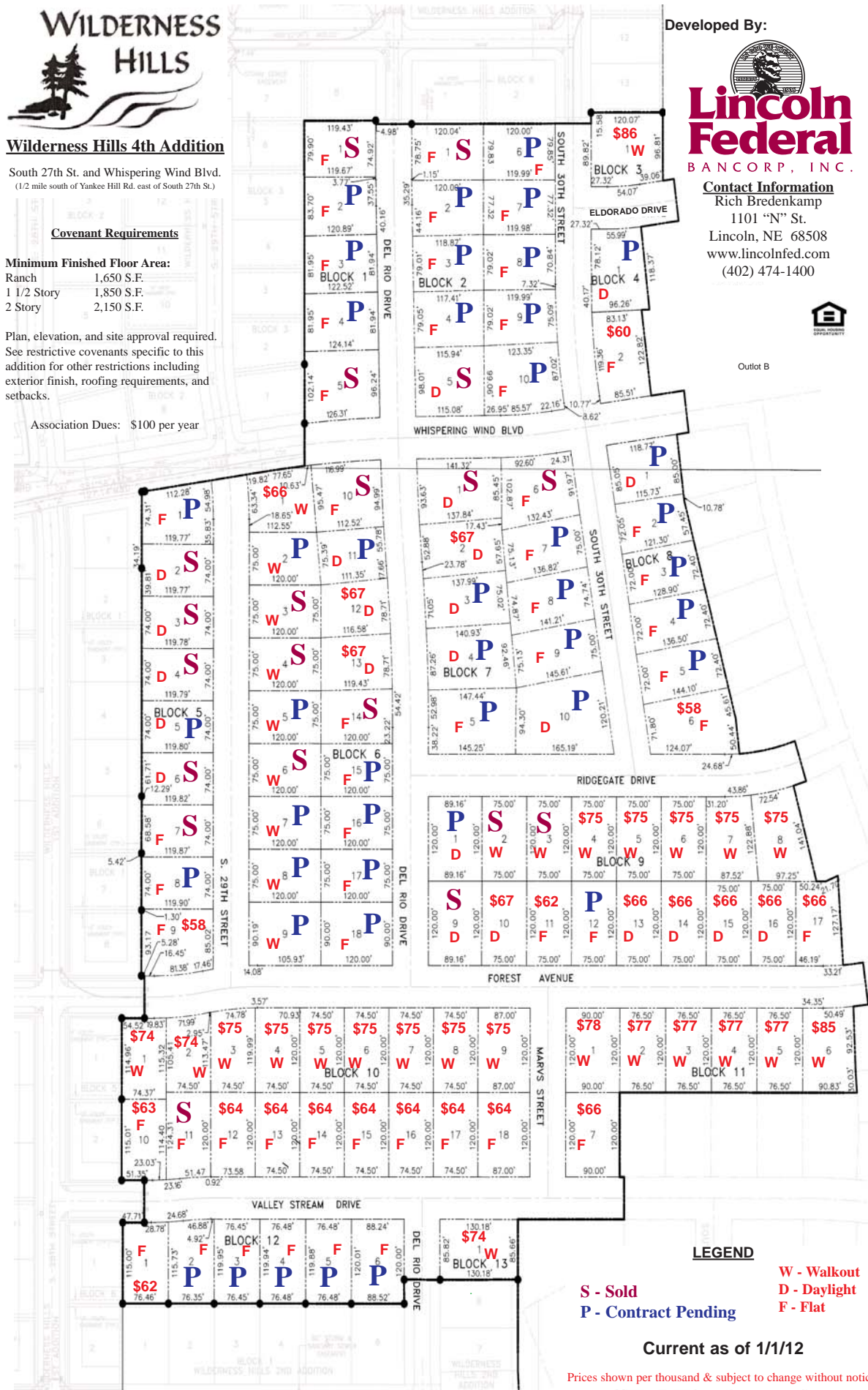
**Lincoln Federal**  
BANCORP, INC.

**Contact Information**

Rich Bredenkamp  
1101 "N" St.  
Lincoln, NE 68508  
www.lincolnfed.com  
(402) 474-1400



Outlot B



**LEGEND**

- S - Sold
- P - Contract Pending
- W - Walkout
- D - Daylight
- F - Flat

Current as of 1/1/12

Prices shown per thousand & subject to change without notice.