



Wilderness Hills 2nd & 3rd Additions

27th St. and Yankee Hill Rd.
(1/2 mile south of Yankee Hill Rd. east of South 27th St.)

Covenant Requirements

Minimum Finished Floor Area:

Ranch	1,650 S.F.
1 1/2 Story	1,850 S.F.
2 Story	2,150 S.F.

Plan, elevation, and site approval required. See restrictive covenants specific to this addition for other restrictions including exterior finish, roofing requirements, and setbacks.

Developed By:



Lincoln Federal
BANCORP, INC.

Contact Information

Rich Bredekamp
1101 "N" St.
Lincoln, NE 68508
www.lincolnfed.com
(402) 474-1400

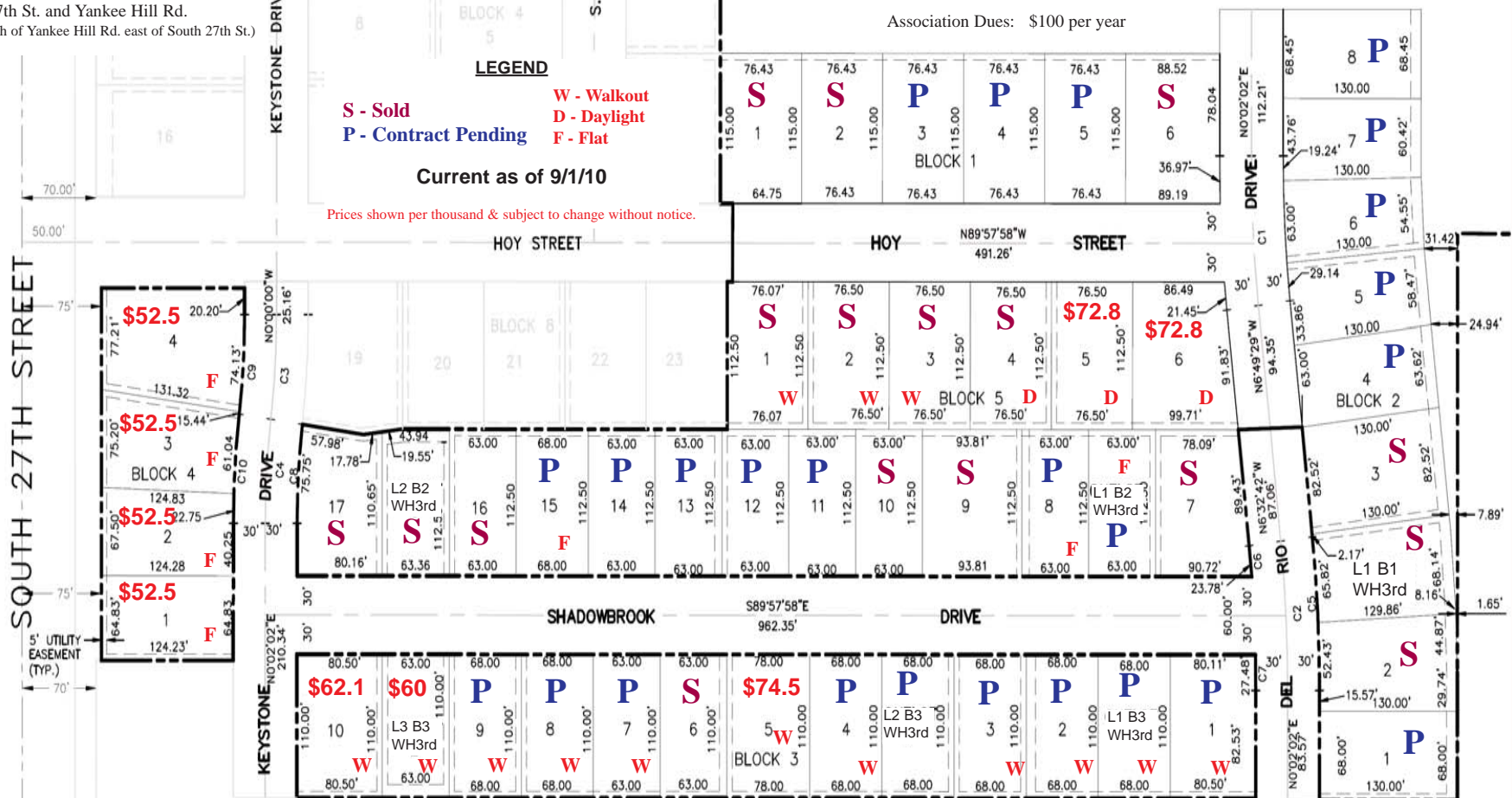
Association Dues: \$100 per year

LEGEND

S - Sold **W - Walkout**
P - Contract Pending **D - Daylight**
 F - Flat

Current as of 9/1/10

Prices shown per thousand & subject to change without notice.



HOMEOWNERS: Lots available for direct purchase!